

# NSW Water Solutions

...for water, infrastructure, data and the environment

NSW Water Solutions (NSW-WS) is a business group of the NSW Department of Commerce and comprises professional engineers, environmental scientists, surveyors and technicians to the water industry. We have resident expertise and experience in the investigation, design, advice and management of water, infrastructure, data and environmental issues: including water and sewage treatment plants, dams, stormwater, wetlands and the coastal zone.

## Services Provided

NSW Water Solutions is actively engaged in partnering with clients to provide NSW communities with innovative design approaches, cost effective measures and integrated water solutions to manage the State's limited water supply and to protect and enhance our natural waterways. We provide advice and technical solutions that clients can trust. Our services include:

- Headworks – Dams & Civil Projects
- Geotechnical & Environmental Services
- Strategic Water Management
- Water Services
- Wastewater Services
- Surveying & Spatial Information Services
- Environmental Data Monitoring Services
- Studies of the Natural Environment
- Manly Hydraulics Laboratory

## Benefits

Our expertise in developing innovative water solutions provides value to government via significant cost savings to the community with enhanced environmental outcomes. Environmental issues and social impacts are important concerns for any infrastructure development and are at the forefront of our design considerations.

We are committed to the stewardship of the State's natural water environment and this is demonstrated by our experience in providing clients with built and non-built water solutions, specifically tailored to their needs.

Technical expertise in dams, water supply, sewerage, stormwater, fishways, earthquakes, wetlands, coastal zone management, breakwaters, seawalls, flood levees, environmental data monitoring, physical modelling, surveying and spatial information.

Acknowledged as a leader in the provision of modern and cost effective water and sewerage treatment technologies.

*"NSW Water Solutions aims to provide solutions that build better towns and cities and enables the long-term sustainability of our natural water environment."*



capability statement

© Department of Commerce

More information

[www.commerce.nsw.gov.au](http://www.commerce.nsw.gov.au)



NSW Department of  
Commerce

# NSW Water Solutions

## business unit functions...

*NSW Water Solutions (NSW-WS) is a fee-for-service business group of the NSW Department of Commerce. NSW Water Solutions is organised into several service line units, which offer specific functions and where projects are undertaken. Clients receive these services in an integrated manner aimed at providing a complete service or solution addressing their needs or problem.*

### Dams & Civil

Dam investigation & design; dam safety studies, risk assessment and management; dam surveillance; compliance documentation; wetland design, stormwater management, drainage systems and flow control structures; fishway design; river management and urban flood protection schemes; and general civil engineering.

### Geotechnical & Environmental Services

Geotechnical investigations for all civil engineering projects [especially for dam projects]; geological investigations; earthquake engineering; environmental studies, assessments and advice; contaminated site studies and management.

### Strategic Water Management

Strategic business planning for water infrastructure & services; pricing strategies; financial modeling & sustainability advice; water services plans; asset management software and consultation.

### Water Services

Integrated planning studies for water usage [involving the whole water cycle]; investigation, concept & detailed designs and documentation for water treatment plants; membrane technology for water treatment; water supply infrastructure investigations; hydrological studies; drought and flood studies and advice; and reticulation analysis.

### Wastewater Services

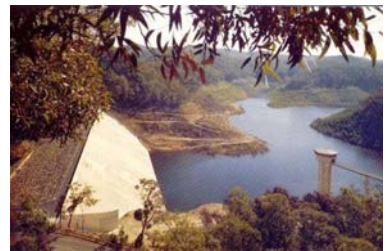
Sewerage systems investigation, design & management; transfer systems design; sewage treatment; re-use & reclaimed water management; automated control systems; and sewerage plant operations.

### Surveying & Spatial Information Services

Surveying; spatial information capture, analysis & web-based delivery; pipeline investigation & design; hydrographic surveying; special purpose mapping; precision surveying; CADD systems & databases; and land boundary and building surveys.

### Manly Hydraulics Laboratory (MHL) - the State's Hydraulics Laboratory

Comprehensive [and real-time] environmental data monitoring of rainfall, waves, tides, estuaries, rivers, water quality, wind and pressure. Physical scale modeling of water engineering structures, numerical modeling, warning/alert systems for floods and inundation, field experiments, investigation and sewer flow monitoring. Investigations, studies and solutions for natural waterways. MHL staff include a scientific diving team working on heritage and engineering projects.



## capability statement

© Department of Commerce

### More information

[www.commerce.nsw.gov.au](http://www.commerce.nsw.gov.au)



NSW Department of  
Commerce